



COLLEGES | COLLÈGES
ONTARIO | ONTARIO

College **RESOURCES**

ENVIRONMENTAL SCAN 2014

College **RESOURCES** 2014

TABLE OF CONTENTS

1. Highlights	2	4. Human resources trends	10
2. College system revenues and expenses	3	Table 2. College staffing levels, 2012-13.....	10
Figure 1. Ontario college system revenues, 2012-13.....	3	Figure 7. Number of full-time college staff by category, 1997-98 to 2012-13.....	11
Figure 2. Ontario college system expenses, 2012-13	4	5. Student financial aid.....	12
3. Trends in college funding	5	Table 3. Levels of student assistance and number of recipients.....	12
Figure 3. Enrolment and revenue changes, 1998-99 to 2013-14	5	Table 4. Canada-Ontario Integrated Student Loan default rates for Ontario institutions	13
Figure 4. Estimated grant and tuition fee revenue per college student, all provinces, 2012-13	6	6. Appendices	14
Figure 5. Operating funding and regulated tuition fees per student, Ontario education sectors, 2013-14.....	7		
Figure 6. Space per student, Ontario education sectors	8		
Table 1. Summary of apprenticeship per diem history, 1998-99 to 2013-14	9		

1. HIGHLIGHTS

REVENUES AND EXPENSES

- In 2012-13, college system revenues totaled almost \$3.7 billion. Grant revenue from all sources accounts for half of college system revenue.
- College system expenses amounted to about \$3.5 billion. Like other organizations in both the public and private sectors, salaries and benefits are by far the largest expense item for colleges.

TRENDS IN COLLEGE FUNDING

- In 2013-14, real operating funding per student (FTE) was about five per cent higher than in 1998-99 – but 16 per cent lower than during the peak in 2007-08.
- Per student revenue from operating grants and tuition fees for Ontario colleges continues to be the lowest among the provinces. Funding per student for Ontario colleges continues to be significantly lower than that for secondary schools and universities.
- Space per student is much lower for Ontario colleges (90 square feet per student) in comparison to universities and secondary schools.
- In current dollars, the apprenticeship per diem has decreased slightly since 1998-99. However, after inflation is taken into account, the per diem has decreased by 28 per cent. The student in-school fee, which was implemented in 2002-03, has not been increased since its introduction.

HUMAN RESOURCES

- Colleges employ more than 43,000 people. From 1997-98 to 2012-13, the number of full-time staff employed at colleges increased by 28 per cent, while enrolment increased by 31 per cent.

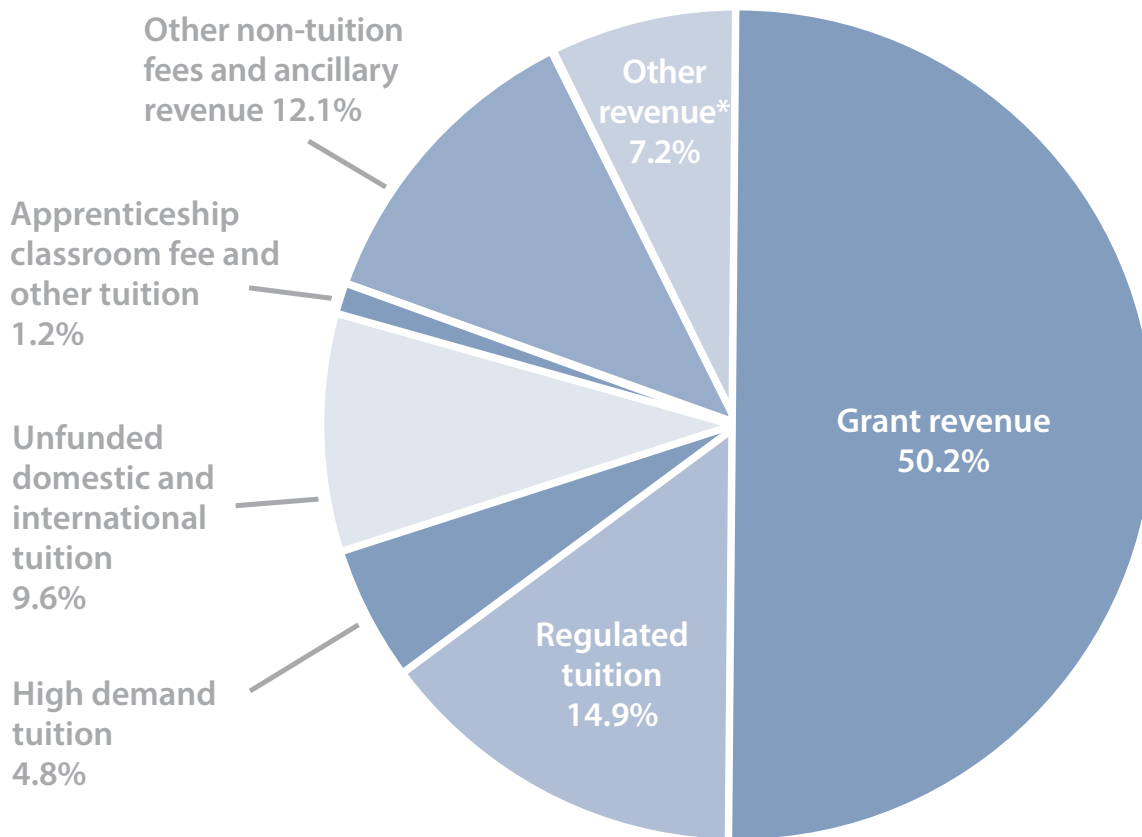
STUDENT FINANCIAL AID

- In 2012-13, almost 125,000 college students were OSAP recipients. This represents about two-thirds of the total full-time post-secondary enrolment.
- The default rate for student loans for all post-secondary institutions in 2012 was 9.8 per cent. For the college system, it was 13.4 per cent.

2. COLLEGE SYSTEM REVENUES AND EXPENSES

Figure 1. Ontario college system revenues, 2012-13

Total revenue = \$3,670,751,796



Source: Ontario Ministry of Training, Colleges and Universities, CFIS.

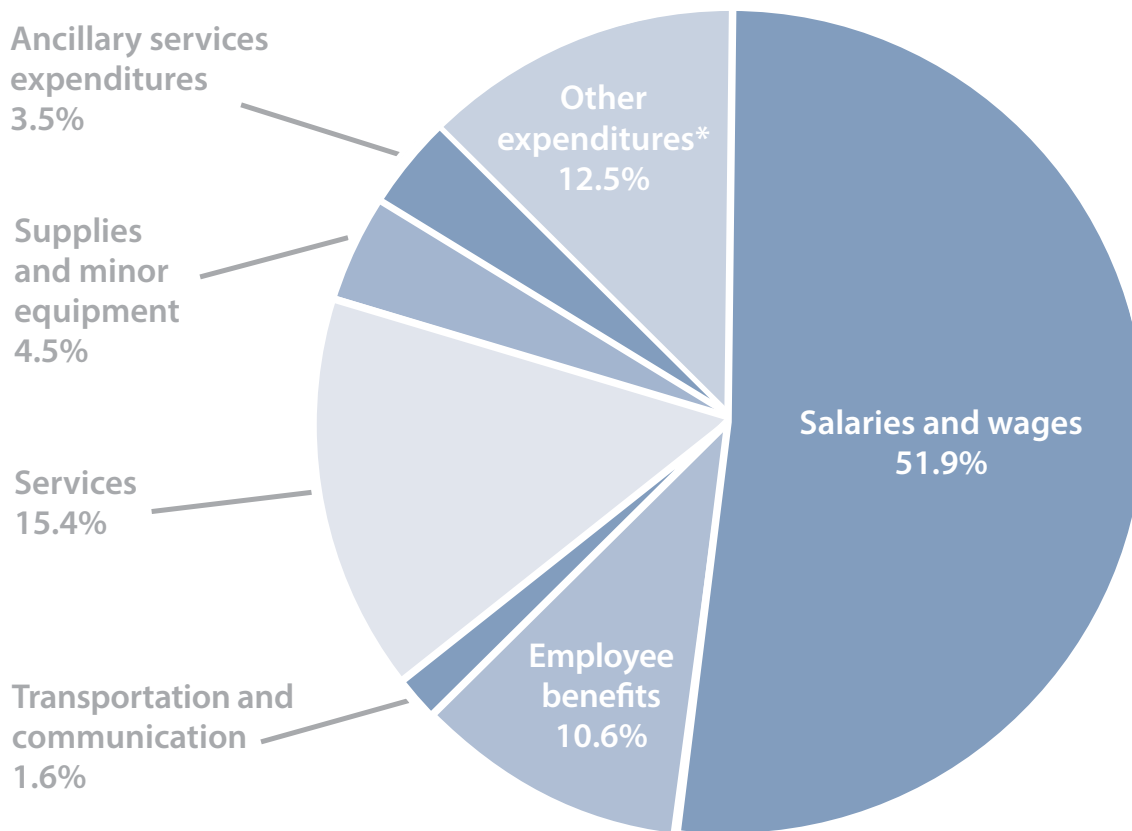
*Includes contractual and other fee for services.

- Grant revenue from all sources accounts for 50 per cent of college system revenue.
- Tuition fees are also a significant source of revenue for colleges. Regulated and high-demand tuition accounts for 19.7 per cent of revenue.

2. COLLEGE SYSTEM REVENUES AND EXPENSES – CONTD.

Figure 2. Ontario college system expenses, 2012-13

Total expense = \$3,543,769,955



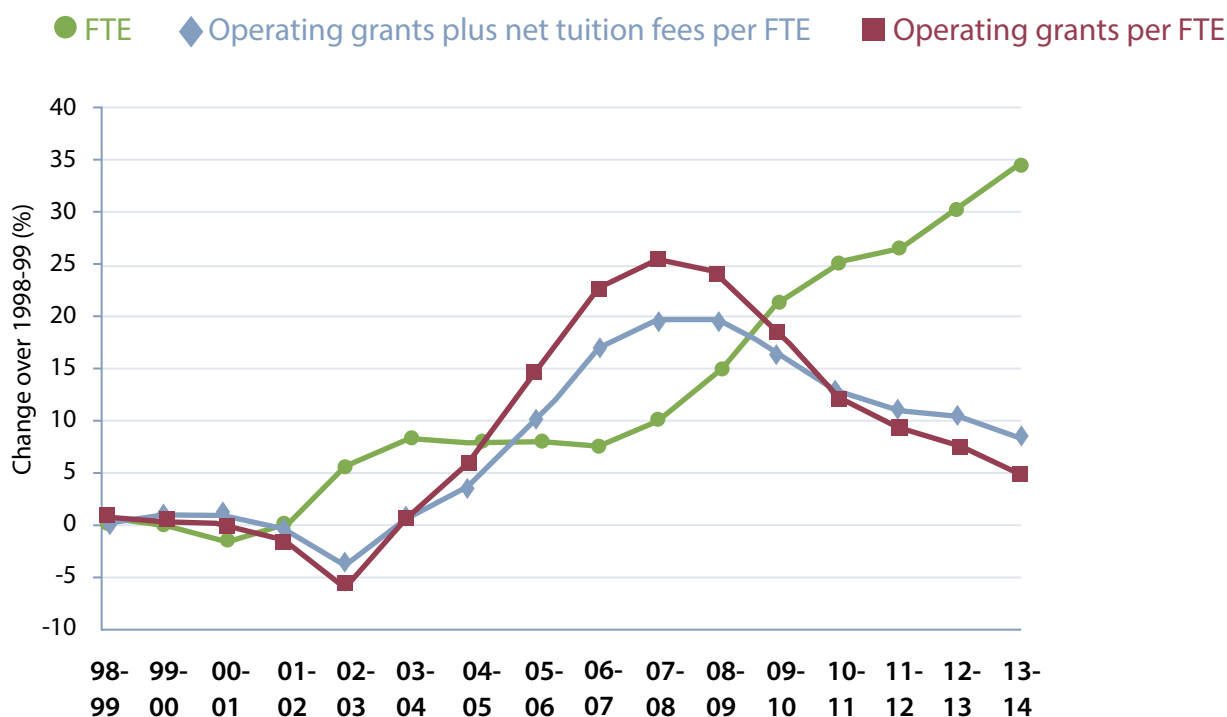
Source: Ontario Ministry of Training, Colleges and Universities, CFIS.

*Includes amortization expense.

- College system expenses include items such as amortization expense, contract services, scholarships and student assistance from the tuition set-aside.
- Like other organizations in both the public and private sectors, compensation costs – salaries and benefits – are the largest expense item for colleges.

3. TRENDS IN COLLEGE FUNDING

Figure 3. Enrolment and revenue changes, 1998-99 to 2013-14 (Indexed to 1998-99)



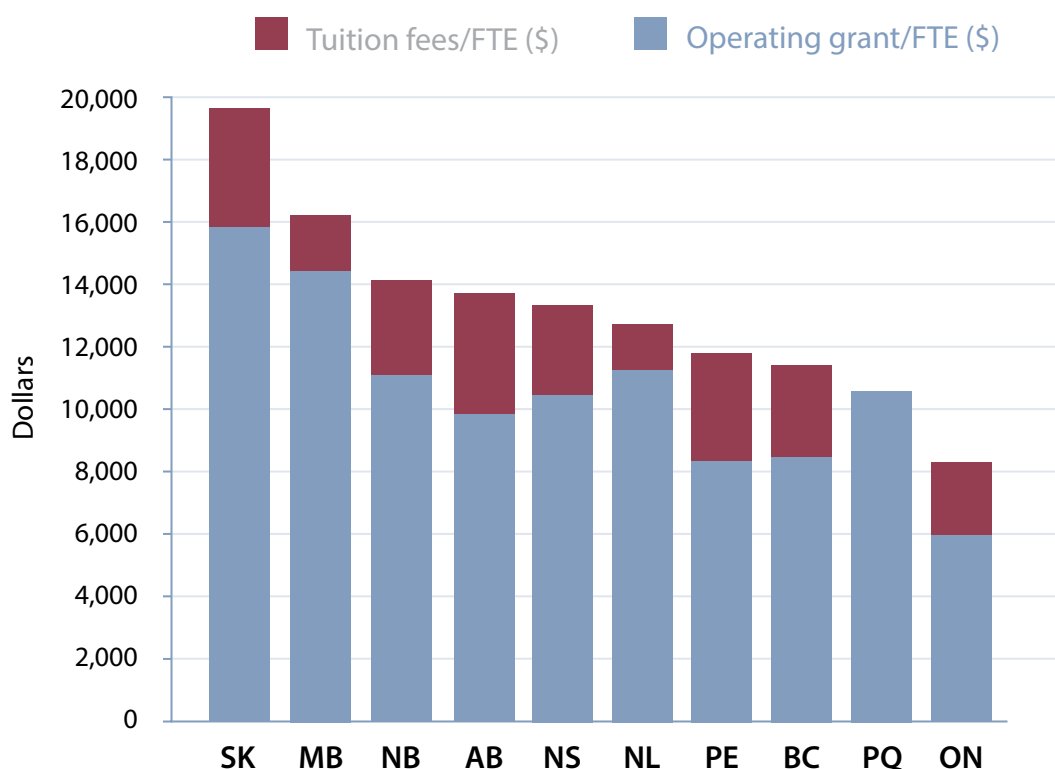
Note: Revenue figures are in constant 2002 dollars. Figures exclude tuition set-aside, collaborative and second-entry nursing and clinical education funding for collaborative nursing. Tuition figures represent regulated tuition fees.

Sources: Ontario Ministry of Training, Colleges and Universities and Ministry of Finance, Statistics Canada and Colleges Ontario.

- Since 2007-2008, growth in operating grants has not kept pace with growth in enrolment.
- In 2013-14, real operating grants per student are about five per cent higher than in 1998-99 – but 16 per cent lower than they were at their peak in 2007-08.
- When tuition fees and operating grants are considered together, in 2013-14, real per student revenue is expected to be about nine per cent higher than in 1998-99. However, compared to the 2007-08 peak, it will be about nine per cent lower.

3. TRENDS IN COLLEGE FUNDING – CONTD.

Figure 4. Estimated grant and tuition fee revenue per college student, all provinces 2012-13



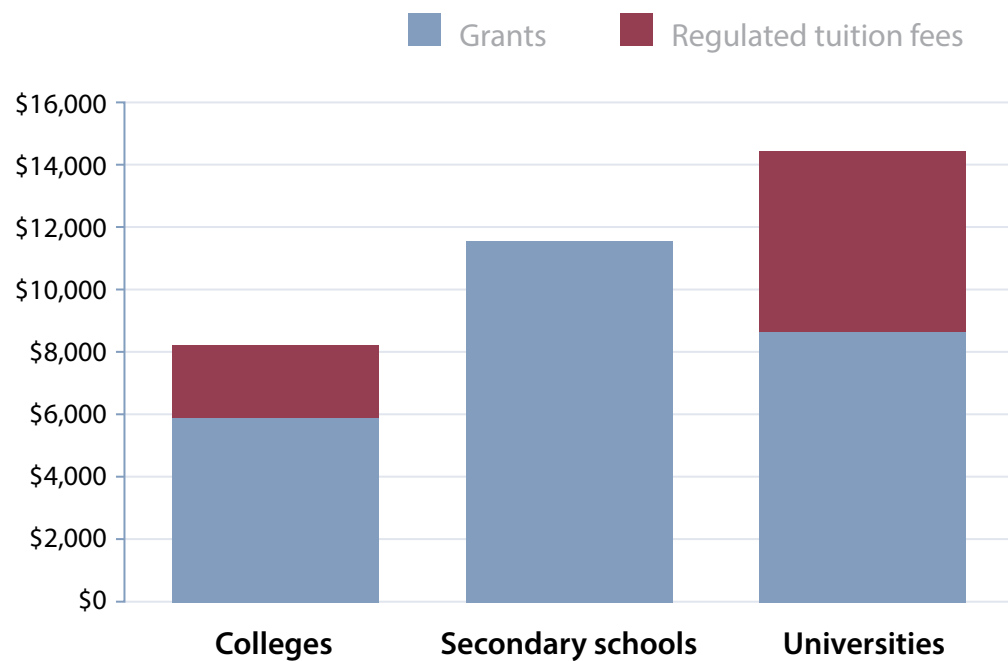
Notes: Ontario figures exclude the tuition set-aside and collaborative and second-entry nursing and clinical education funding for collaborative nursing. Operating grants and enrolments are for provincially funded activity and exclude apprenticeship. Enrolment and funding data for Quebec are for full-time students.

Sources: Colleges Ontario, Ontario Ministry of Training Colleges and Universities, relevant provincial ministries.

- When college operating grants and tuition fees are considered together, in 2012-13 per student revenue in Ontario (\$8,272) was significantly lower than that in any other province.
- Per student revenue in Saskatchewan was the highest among the provinces and more than double that in Ontario.

3. TRENDS IN COLLEGE FUNDING – CONTD.

Figure 5. Operating funding and regulated tuition fees per student, Ontario education sectors, 2013-14



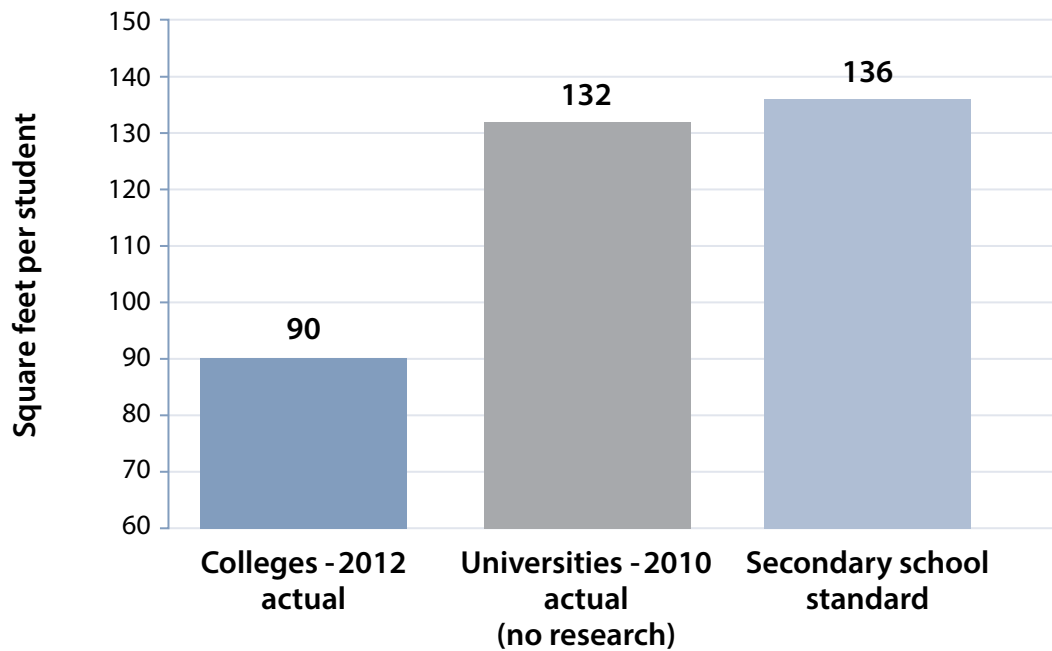
Note: Figures for colleges exclude the tuition set-aside and collaborative and second-entry nursing and clinical education funding for collaborative nursing. Tuition fees for colleges are estimates.

Source: Ministry of Training, Colleges and Universities, Ontario Public School Boards Association and Colleges Ontario.

- On a per student basis, funding for Ontario colleges continues to lag that received by publicly funded secondary schools and universities.

3. TRENDS IN COLLEGE FUNDING – CONTD.

Figure 6. Space per student, Ontario education sectors



Source: Educational Consulting Services Corp., Colleges Ontario Facilities Standards and Inventory Report (COFSI), 2013.

- Capital funding for colleges has resulted in lower space per student than in the other education sectors.
- The shortfall in space is particularly acute in the student success and learner support spaces that contribute to student success and retention.

3. TRENDS IN COLLEGE FUNDING – CONTD.

Table 1. Summary of apprenticeship per diem history, 1998-99 to 2013-14

	Per diem fee	Student fee	Total apprenticeship budget per student	Ontario CPI (constant 2002 dollars)	Per diem in constant 2002 dollars	Total per student apprenticeship budget in constant 2002 dollars
1998-99	\$58.64	n/a	\$58.64	90.6	\$64.72	\$64.72
1999-00	\$58.64	n/a	\$58.64	92.4	\$63.46	\$63.46
2000-01	\$58.64	n/a	\$58.64	95.1	\$61.66	\$61.66
2001-02	\$59.81	n/a	\$59.81	98.0	\$61.03	\$61.03
2002-03	\$51.01	\$10	\$61.01	100.0	\$51.01	\$61.01
2003-04	\$52.23	\$10	\$62.23	102.7	\$50.86	\$60.59
2004-05	\$53.47	\$10	\$63.47	104.6	\$51.12	\$60.68
2005-06	\$54.74	\$10	\$64.74	106.9	\$51.21	\$60.56
2006-07	\$56.03	\$10	\$66.03	108.8	\$51.50	\$60.69
2007-08	\$56.03	\$10	\$66.03	110.8	\$50.57	\$59.59
2008-09	\$57.35	\$10	\$67.35	113.3	\$50.62	\$59.44
2009-10	\$57.35	\$10	\$67.35	113.7	\$50.44	\$59.23
2010-11	\$57.35	\$10	\$67.35	116.5	\$49.23	\$57.81
2011-12	\$57.35	\$10	\$67.35	120.1	\$47.75	\$56.08
2012-13	\$57.35	\$10	\$67.35	121.8	\$47.09	\$55.30
2013-14	\$57.35	\$10	\$67.35	123.0	\$46.63	\$54.76
Change 1998-99 to 2013-14	-2.2%		14.9%	35.8%	-28%	-15.4%

Note: Per diem and classroom fee are based on the standard six-hour training day.

Sources: Ontario Ministry of Training, Colleges and Universities and Ministry of Finance, Statistics Canada and Colleges Ontario.

4. HUMAN RESOURCES TRENDS

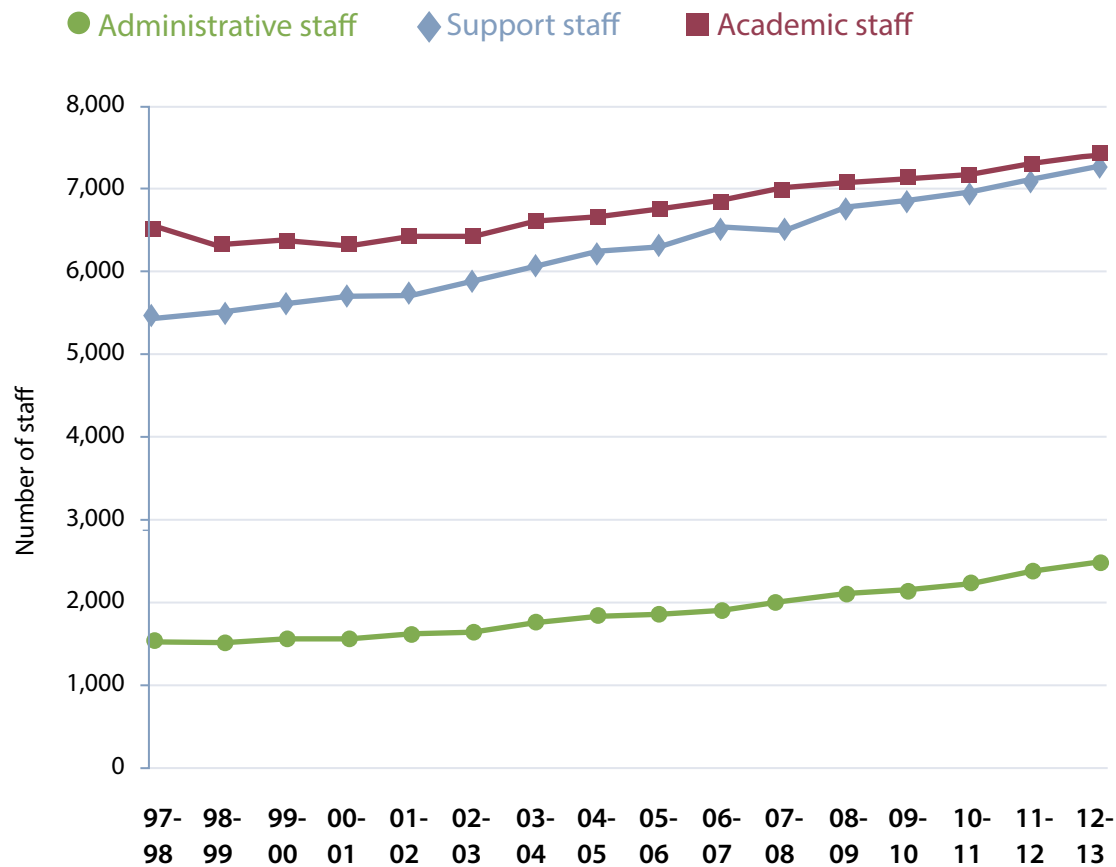
Table 2. College staffing levels (head count), 2012-13

	Full-time	Part-time	Total
Academic staff	7,362	15,314	22,676
Support staff	7,239	11,034	18,273
Administrative staff	2,450	n/a	2,450
Total	17,051	26,348	43,399

Source: College Employer Council.

4. HUMAN RESOURCES TRENDS – CONTD.

Figure 7. Number of full-time college staff by category, 1997-98 to 2012-13



Sources: College Employer Council and Colleges Ontario.

- The increase in full-time staffing levels at college has averaged less than two per cent a year for 15 years.
- The total number of full-time staff at colleges increased by 28 per cent from 1997-98 to 2012-13 while enrolment increased by 31 per cent.

5. STUDENT FINANCIAL AID

Table 3. Levels of student assistance and number of recipients, college sector

Year	Canada -Ontario Integrated Student Loans (\$)	Total Canada and Ontario Grants excluding OSOG ^{1,2} (\$)	No. of college OSAP recipients	Total full-time post-secondary enrolment ^{**}	% of total
2005-06	430,131,400	57,362,068	59,605	151,105	39%
2006-07	457,360,843	64,542,486	63,390	151,147	42%
2007-08	486,729,589	65,951,458	66,994	155,124	43%
2008-09	515,398,451	72,819,012	71,737	161,422	44%
2009-10	545,333,004	152,203,148	81,328	172,070	47%
2010-11	623,246,349	164,232,978	88,712	178,139	50%
2011-12*	689,338,751	195,598,764	111,529	179,740	62%
2012-13*	782,584,506	224,477,517	124,551	185,445	67%

Notes: * 2011-12 and 2012-13 number of OSAP recipients includes students who received the 30% Off Ontario Tuition grant (including recipients who applied through a separate stand-alone application for the grant).

** Full-time post-secondary head count (excludes other, sponsored and international students).

¹The Ontario Student Opportunity Grant reduces repayable debt on Canada-Ontario Integrated Student Loans to \$7,000 per two-term academic year up until 2009-10, and \$7,300 from 2010-11 onward. OSOG entitlements are determined collectively by fiscal year.

²The composition of Canada and Ontario grants has evolved over the past decade. By 2012-13, the grants provided included the following: Canada Student Grant (CSG) for Persons with Dependents, CSG for Persons from Low-Income Families, CSG for Persons with Permanent Disabilities, CSG Transition Grant, CSG for Persons from Middle-Income Families, Ontario Access Grants, Ontario Access Grants for Crown Wards, Ontario Commuting and Travel Grants, Textbook and Technology Grant, 30% Off Ontario Tuition grant.

Source: Ontario Ministry of Training, Colleges and Universities.

5. STUDENT FINANCIAL AID – CONTD.

Table 4. Canada-Ontario Integrated Student Loan default rates for Ontario institutions

Type of institution	Default Rate for 2012 (%)
Publicly assisted colleges	13.4
Universities	4.6
Private career colleges	20.6
Other institutions	4.2
Post-secondary system total	9.8

Source: Ontario Ministry of Training, Colleges and Universities.

- The 2012 default rates reflect the repayment status of students who were issued Canada-Ontario Integrated Student Loans in the 2009-10 academic year and completed or exited their studies by 2010-11. The status of these loans was assessed as of July 2012 or about two years after the student exited full-time studies.
- In previous years, the government released default rates that reflected the proportion of borrowers who were in default on their repayment obligation for the Ontario Student Loan. To provide more complete information on the repayments, the default rate report for 2012 reports on the proportion of borrowers who defaulted on their repayment obligation for the Canada-Ontario Integrated Student Loan (COISL), rather than just the Ontario Student Loan.

6. APPENDIX

Appendix 1. Operating grants and regulated tuition fee revenues per FTE, 1998-99 to 2013-14

Academic year	1998-99	1999-00	2000-01	2001-02	2002-03	2003-04	2004-05	2005-06	2006-07
Total operating grants ¹ (\$millions)	\$699	\$709	\$722	\$746	\$768	\$869	\$922	\$1,019	\$1,105
FTE ²	169,367	168,997	166,912	169,923	179,080	183,374	182,404	182,900	182,255
Total operating grants per FTE	\$4,127	\$4,196	\$4,327	\$4,389	\$4,286	\$4,737	\$5,053	\$5,569	\$6,065
Ontario CPI (constant 2002 dollars) ³	90.6	92.4	95.1	98.0	100.0	102.7	104.6	106.9	108.8
Total operating grants per FTE – constant dollars	\$4,555	\$4,541	\$4,550	\$4,479	\$4,286	\$4,612	\$4,830	\$5,209	\$5,575
Regulated tuition fee revenue per FTE ⁴	\$1,543	\$1,684	\$1,718	\$1,752	\$1,786	\$1,820	\$1,820	\$1,820	\$1,911
Tuition fee revenue per FTE – constant dollars	\$1,703	\$1,823	\$1,807	\$1,788	\$1,786	\$1,772	\$1,740	\$1,703	\$1,756
Tuition set-aside per FTE ⁵	\$97	\$139	\$150	\$160	\$170	\$180	\$180	\$180	\$180
Net tuition fee revenue per FTE	\$1,446	\$1,545	\$1,569	\$1,592	\$1,616	\$1,640	\$1,640	\$1,640	\$1,731
Net tuition fee revenue per FTE – constant dollars	\$1,596	\$1,672	\$1,649	\$1,625	\$1,616	\$1,597	\$1,568	\$1,534	\$1,591
Total operating grants plus net tuition fees per FTE	\$5,573	\$5,741	\$5,895	\$5,981	\$5,902	\$6,377	\$6,693	\$7,209	\$7,796
Total operating grants plus net tuition fees per FTE – constant dollars	\$6,151	\$6,213	\$6,199	\$6,103	\$5,902	\$6,209	\$6,398	\$6,743	\$7,166

Academic year	2007-08	2008-09	2009-10	2010-11	2011-12	2012-13	2013-14	Per cent change 1998-99 to 2013-14
Total operating grants ¹ (\$millions)	\$1,177	\$1,238	\$1,257	\$1,263	\$1,281	\$1,315	\$1,340	91.8
FTE ²	185,932	193,420	205,203	211,817	214,126	220,721	228,005	34.6
Total operating grants per FTE	\$6,331	\$6,402	\$6,127	\$5,965	\$5,983	\$5,959	\$5,879	42.5
Ontario CPI (constant 2002 dollars) ³	110.8	113.3	113.7	116.5	120.1	121.8	123.0	35.8
Total operating grants per FTE – constant dollars	\$5,714	\$5,651	\$5,388	\$5,120	\$4,982	\$4,893	\$4,779	4.9
Regulated tuition fee revenue per FTE ⁴	\$2,008	\$2,110	\$2,208	\$2,311	\$2,414	\$2,524	\$2,600	68.5
Tuition fee revenue per FTE – constant dollars	\$1,812	\$1,862	\$1,942	\$1,984	\$2,010	\$2,072	\$2,114	24.1
Tuition set-aside per FTE ⁵	\$180	\$180	\$180	\$190	\$201	\$212	\$219	126.0
Net tuition fee revenue per FTE	\$1,828	\$1,930	\$2,028	\$2,121	\$2,213	\$2,312	\$2,381	64.6
Net tuition fee revenue per FTE – constant dollars	\$1,650	\$1,703	\$1,784	\$1,820	\$1,843	\$1,899	\$1,935	21.3
Total operating grants plus net tuition fees per FTE	\$8,159	\$8,332	\$8,155	\$8,085	\$8,196	\$8,272	\$8,259	48.2
Total operating grants plus net tuition fees per FTE – constant dollars	\$7,363	\$7,354	\$7,172	\$6,940	\$6,825	\$6,791	\$6,715	9.2

¹ Figures exclude CERF and collaborative and second-entry nursing and clinical education funding for collaborative nursing.

² Enrolment for 2013-14 is estimated.

³ Sources include Statistics Canada, Ontario Ministry of Training, Colleges and Universities and Ministry of Finance, OCAS and Colleges Ontario.

⁴ Tuition fee figures for 2013-14 are estimates.

⁵ Tuition set-aside figures are estimates.

Appendix 2. Number of college student assistance recipients, by student type

Student group	2005-06	2006-07	2007-08	2008-09	2009-10	2010-11	2011-12*	2012-13*
Dependent at home	13,517	14,605	15,970	17,108	20,233	21,728	30,994	37,944
Dependent away	15,610	16,711	18,229	19,801	21,512	22,429	31,265	32,250
Independent home	4,162	4,591	5,003	5,496	6,812	8,105	9,257	11,324
Independent away	14,887	15,899	16,203	17,257	19,519	21,415	23,610	25,561
Married	5,799	5,827	5,682	5,932	6,770	7,886	8,427	8,827
Sole support	5,480	5,595	5,773	5,991	6,481	7,141	7,976	8,645
Total	59,455	63,228	66,860	71,585	81,327	88,704	111,529	124,551

Notes: * 2011-12 and 2012-13 numbers include students who received the 30% Off Ontario Tuition (including recipients who applied through a separate stand-alone application for the grant).

Source: Ontario Ministry of Training, Colleges and Universities.

Appendix 3. Average student assistance issued to college students, by student type (\$)

Student group	2005-06	2006-07	2007-08	2008-09	2009-10	2010-11	2011-12*	2012-13*
Dependent at home	4,497	4,617	4,786	4,684	4,762	4,853	4,015	4,222
Dependent away	7,436	7,507	7,410	7,239	7,503	7,593	6,098	6,538
Independent home	4,712	4,903	5,286	5,273	5,456	5,476	5,620	5,782
Independent away	9,038	9,226	9,469	9,612	9,979	10,256	10,394	10,644
Married	11,774	11,969	12,216	12,224	12,926	14,085	14,333	14,637
Sole support	16,095	16,102	15,919	16,254	18,565	19,135	19,009	19,576
Total	8,199	8,254	8,266	8,217	8,577	8,878	7,935	8,086

Notes: * 2011-12 and 2012-13 numbers include students who received the 30% Off Ontario Tuition (including recipients who applied through a separate stand-alone application for the grant).

Source: Ontario Ministry of Training, Colleges and Universities.

Appendix 4. Distribution of student assistance recipients by post-secondary sector and student group, 2012-13*

	Married/sole support		Independent		Dependent	
	Number	Per cent	Number	Per cent	Number	Per cent
Colleges of applied arts and technology	17,472	50.4%	36,885	38.6%	70,194	31.1%
Universities	8,614	24.9%	51,689	54.0%	152,641	67.7%
Private career colleges	8,270	23.9%	5,640	5.9%	1,877	0.8%
Other Ontario post-secondary institutions	284	0.8%	1,437	1.5%	731	0.3%

Notes: * Ontario institutions only.

Source: Ontario Ministry of Training, Colleges and Universities.